

YOUR MONTHLY DOSE OF GREEN

THE OFFICIAL NEWSLETTER
OF

THE CHAIR OF "FONDATION DIANE"
EDUCATION IN ECO-CITIZENSHIP AND SUSTAINABLE DEVELOPMENT

NUMBER OF ONGOING PROJECTS

9 PROJECTS SUSPENDED DUE TO
THE COVID-19 PANDEMIC



ONGOING PROJECTS



Development of an **interactive training platform** in eco-citizenship and sustainable development



Strengthening eco-citizen capacities through education for sustainable development, via a **Lebanese "lithothèque"**



Technical Assistance Services for Lebanese Organization: Environmental Compliance and Water conservation



Sustainable Education and Awareness for Water Management in Metn : **raising awareness on water conservation through videos**



Waste **sorting** and **collection**



Mountain guide certificate program: Theoretical and practical training



Doctoral Scholarship on the development of a conceptual model addressed to Lebanese municipalities

PROJECT OF THE MONTH

WASTE COLLECTION FROM THE STREETS OF BEIRUT



artis0s



AFTER THE BEIRUT BLAST

THE CHAIR OF "FONDATION DIANE" IN COLLABORATION WITH THE CLUB "USJ VERTE" AND ITS VOLUNTEERS COLLECTED AND SORTED WASTE FROM THE STREET:

- 24 BAGS FILLED WITH PLASTIC WASTE
- 15 FILLED WITH PAPER
- 5 FILLES WITH CARDBOARD
- 5 FILLED WITH GLASS

THE BAGS WERE TRANSPORTED IN THE TRUCK OF FONDATION DIANE AND DELIVERED TO THE APPROPRIATE RECYCLING PLANTS.

RAISING OUR VOICE FOR THE UNHEARD

THIS MONTH
WE ARE SPEAKING OUT
FOR **BEES**



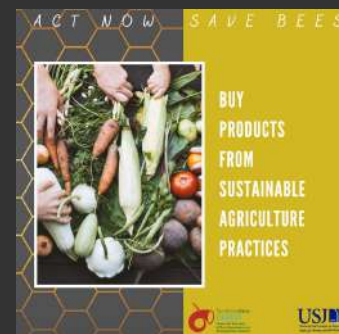
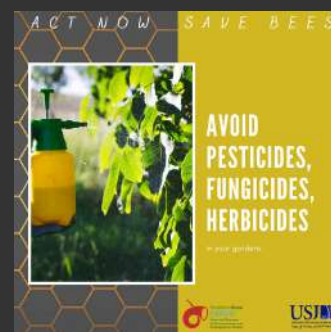
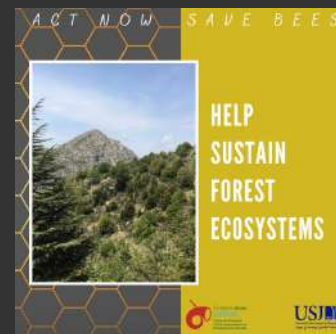
By their way of visiting and collecting elements from flowers without destroying them, bees are **the most efficient and important pollinator**. More specifically, honeybees. They **pollinate 96% of the animal-pollinated crops production**, which represent **75% of total crops**. They are most involved in the pollination services they offer to **modern agriculture**, that enhances agricultural production the most. This species is responsible for the yield increase, with **52 leading global food commodities depending on them**.

As pollinators, honey bees have an **important economic value**, more specifically, in terms of agricultural economics. In fact, in the US as well as in the EU, their value is estimated at about **\$15 billion and €33 billion annually**, respectively. Yield decreased and crop production cost increased because of honey bee declines, leading to an estimated **economic burden of 5.7 billion dollars a year** for the USA.

Through their foraging activity, honey bees **collect pollen, nectar, water, honeydew and propolis** from the environment, sometimes more than 10 km from the hive. Which is why this species is a **strong and convenient sampler** essential when needed to detect chemicals in the environment, and this is **very helpful in the ecotoxicology field**.

In 2009 and 2010, **high mean colony losses** (16 to 40%) occurred in six Canadian provinces, in Belgium, Italy, the Netherlands, Poland, and Greece. According to the results of the winter 2017-2018 survey in which 36 countries participated, **the overall loss rate of honey bees was of 16.4%**.

Many efforts have been made with the aim of identifying the **origin of bees colony losses**. Several different factors have been determined to be affecting the latter: **habitat loss** (lead by intensive land use, creation of farmland, and urbanization, especially for solitary or native bees), **disease and parasites** (infectious agents (e.g. bacteria, virus), parasites (e.g. Varroa), and predators (Vespa velutina)), and **pesticides**. Since the development of intensive agriculture, a large amount of pesticides is used to protect the crops, affecting non-targeted organisms. Insecticides, used in crop production, can be very toxic to honey bees, whereas herbicides make plant areas less attractive for the forager bees..



H
O
W

T
O

P
R
E
S
E
R
V
E

B
E
E
S

?

Click on the megaphone

“

The environment is in us, not outside of us. The trees are our lungs, the rivers our bloodstream. We are all interconnected, and what you do to the environment ultimately you do to yourself.

I A N S O M E R H A L D E R



UPCOMING WORLDS DAYS

Sept. 9 - International Day of Charity



Sept. 10 - World Suicide Prevention Day



Sept. 16 - International Day for the Preservation of the Ozone Layer



Sept. 21 - International Day of Peace



Sept. 24 - World Maritime Day

Instagram - [@chairoffondationdiane](#)

Facebook page - [Chair of Fondation Diane CEEDD - USJ](#)

Website - <https://ceedd-fondation-diane.usj.edu.lb/>

Tel - **+961 1 421000 ext. 5730**

Email address - ceedd-fondation-diane@usj.edu.lb



fondationdiane
CEEDD

Chaire de l'Éducation
à l'Éco-citoyenneté et au
Développement Durable